



National Transportation Safety Board

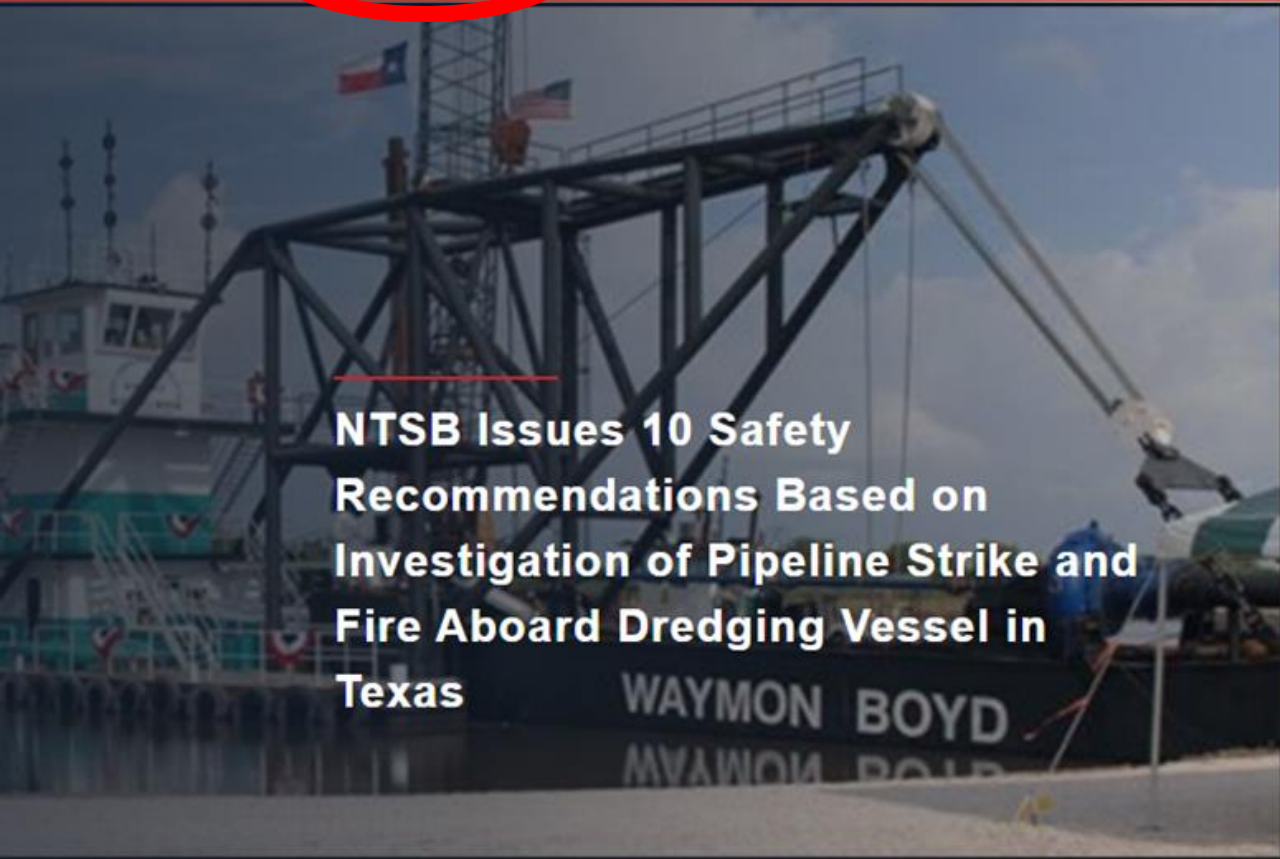
ABA Annual Meeting Grapevine, Texas NTSB Update

Michael Fox

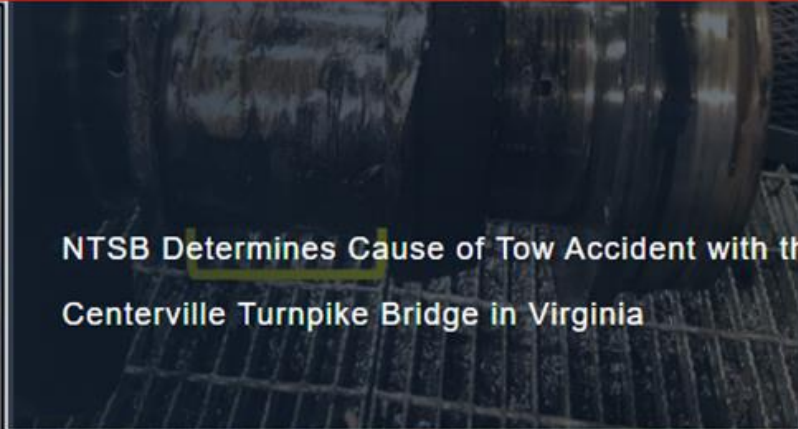
Highway Accident Investigator, Washington, DC

Agenda

- New NTSB website
- Most Wanted List
- Crash investigations update
- Q&A



**NTSB Issues 10 Safety
Recommendations Based on
Investigation of Pipeline Strike and
Fire Aboard Dredging Vessel in
Texas**



**NTSB Determines Cause of Tow Accident with the
Centerville Turnpike Bridge in Virginia**



**NTSB Determines Cause of Fire and Sinking of Fishing
Vessel**

Search Investigation and
Recommendation Data (CAROL Query
Tool)

[Search CAROL](#)

Search for Investigation Case Materials
in Our Dockets

[Search Dockets](#)

Pilots & Public Safety Agencies: Report
a Transportation Accident or a TCAS
Resolution Advisory

[Report an Accident](#)

Investigation Reports


Accident Reports are one of the main products of an NTSB investigation. Reports provide details about the accident, analysis of the factual data, conclusions and the probable cause of the accident, and the related safety recommendations. Most reports focus on a single accident, though the NTSB also produces reports addressing issues common to a set of similar accidents.



[Collision between Sport Utility Vehicle and Medium-Size Bus Transporting Adult Passengers with Disabilities and Special Needs](#) 

Belton, SC

Accident Date: 12/17/2019
Report Date: 11/17/2021
Report Number: HAR-21-02

[Median-Crossing Multivehicle Crash and Postcrash Fire on Interstate 75](#) 

Alachua, FL

Accident Date: 1/3/2019
Report Date: 5/17/2021
Report Number: HAB-21-01



[Home](#) > [Investigations](#) > [Collision between Sport Utilit...](#)

Collision between Sport Utility Vehicle and Medium-Size Bus Transporting Adult Passengers with Disabilities and Special Needs

Investigation Details

What Happened

On Tuesday, December 17, 2019, about 3:30 p.m. eastern standard time, a sport utility vehicle (SUV) was traveling east on US Highway 76 (US-76) in Belton, South Carolina. The posted speed limit was 45 mph. Meanwhile, a medium-size bus—occupied by a driver and 7 passengers, 2 of whom were seated in wheelchairs—was traveling west on US-76 at a speed of about 45 mph. According to a

Completed Investigation

Accident No

HWY20FH001

Highway

Accident Date

12/17/2019

**Location**

Belton, SC

Investigator in Charge**Family Assistance Contact**assistance@ntsb.gov**Public Affairs Contact**

NTSB Media Relations

Contact us:

(202) 314-6100



[Home](#) > [Advocacy](#) > [Most Wanted List](#) > [2021-2022 Most Wanted List](#)



2021-2022 Most Wanted List

The NTSB's Most Wanted List (MWL) highlights transportation safety improvements needed now to prevent accidents, reduce injuries, and save lives. We use the list to focus our advocacy efforts during the current MWL cycle.

The NTSB urges lawmakers, industry, advocacy and community organizations, and every American to learn more about what they can do to **implement** and **champion** the 2021-2022 MWL. Adopting [NTSB safety recommendations](#) associated with these safety items **will save lives**.

Stay Connected:

[Contact Safety Advocacy](#)

[Subscribe to email updates](#)

[Read our blog](#)

Related Links:

[Making the MWL](#)

[Advocating for the MWL](#)

[MWL Advocacy Toolkit](#)

[MWL Brochure](#)

Aviation

Most Wanted List

HIGHWAY

Implement a Comprehensive Strategy to Eliminate Speeding-Related Crashes

Protect Vulnerable Road Users through a Safe System Approach

Prevent Alcohol- and Other Drug-Impaired Driving

Require Collision-Avoidance and Connected-Vehicle Technologies on all Vehicles

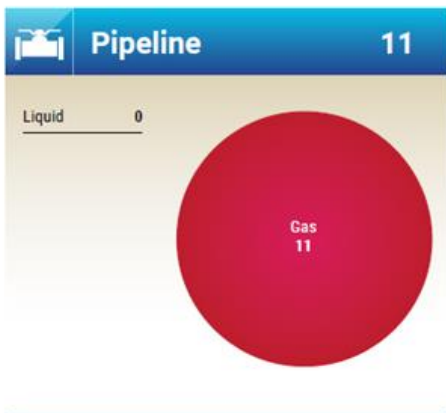
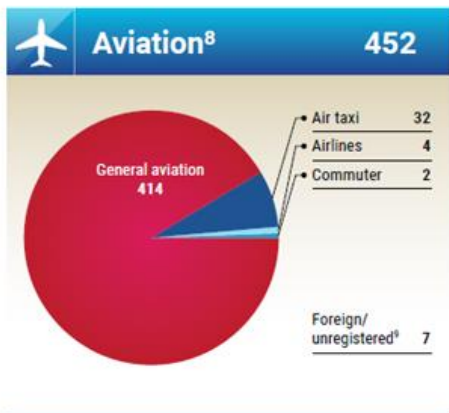
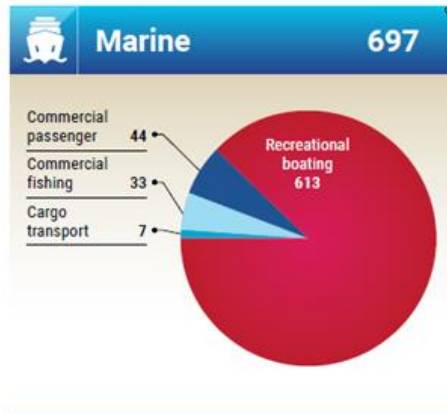
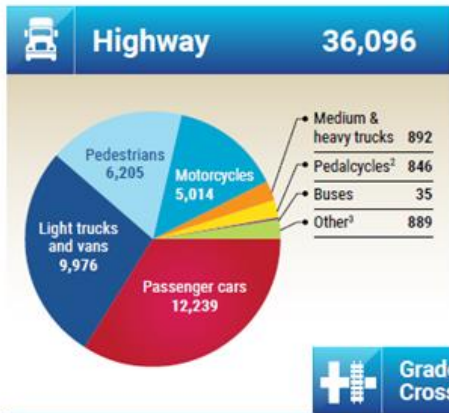
Eliminate Distracted Driving



National Transportation Safety Board US Transportation Fatalities in 2019 – by Mode

Total: 38,178¹

Aviation data is sourced from the NTSB's [2000-2019 Preliminary Aviation Statistics](#). For other transportation modes, the NTSB used data from the Bureau of Transportation Statistics, [Transportation Fatalities by Mode](#).



Footnotes

- ¹ To reduce double counting, BTS excludes railroad fatalities involving motor vehicles at public highway-rail grade crossings and transit fatalities involving non-rail modes from the overall total fatalities.
- ² Pedalcycles include bicycles and other cycles.
- ³ Other refers to occupants of other vehicle types, other non-motorists, and unknown.
- ⁴ Grade crossing fatalities are reported as a separate category but should not be added to the total because they are included in the highway and rail fatalities as appropriate.
- ⁵ Freight, passenger, and commuter rail data are reported by the Federal Railroad Administration. The FRA does not include suicides.
- ⁶ Trespassing fatalities are reported as a separate category but should not be added to the total because they are included in the freight, passenger, and commuter rail fatalities. Trespassing fatalities are not included for rail transit.
- ⁷ Rail transit data are reported by the Federal Transit Administration and include fatalities (including suicides) involving heavy rail, light rail, cable car, inclined plane, monorail/automated guideway, streetcar rail, and hybrid rail.
- ⁸ Total fatalities may not equal the sum of each category because accidents may involve multiple categories.
- ⁹ Foreign/unregistered includes non-US registered aircraft involved in accidents in the United States.

2020 Preliminary Data

Highway: 38,680

Rail: 931

Marine: 851

Aviation: 349

Pipeline: 15

Total 2020 Transportation Fatalities ~40,826

Ongoing NTSB Highway Investigations



Avenal, CA

January 1, 2021



Fort Worth, TX

February 11, 2021



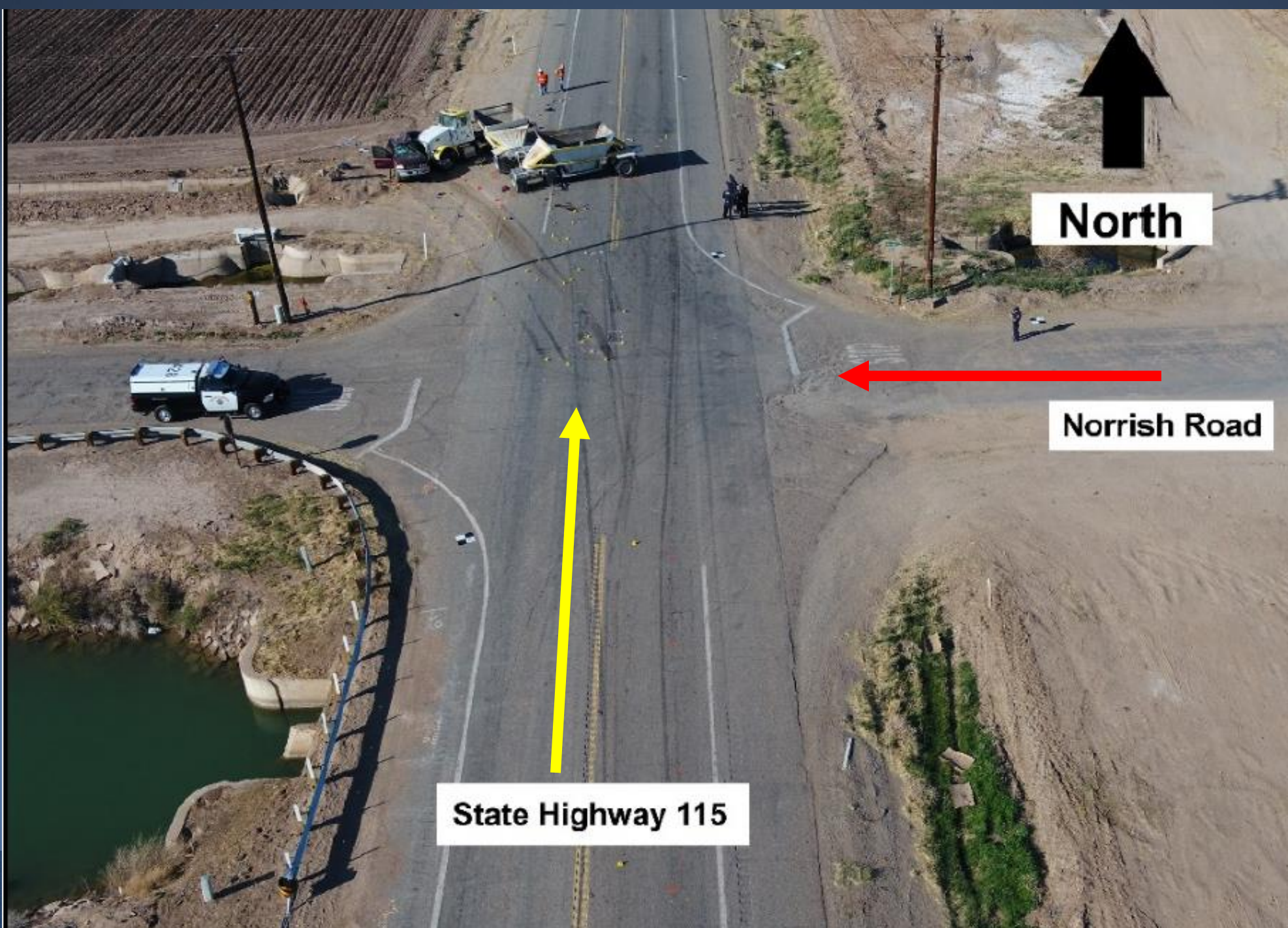


Holtville, CA

March 2, 2021



Front of truck crushed into side of SUV



North

Norrish Road

State Highway 115

Spring, Texas

April 17, 2021



Phoenix, AZ

June 9, 2021





Potential Safety Issues

- Driver fatigue
- Driver hours-of-service exemptions for agricultural operations
- Collision avoidance systems on truck-tractors.

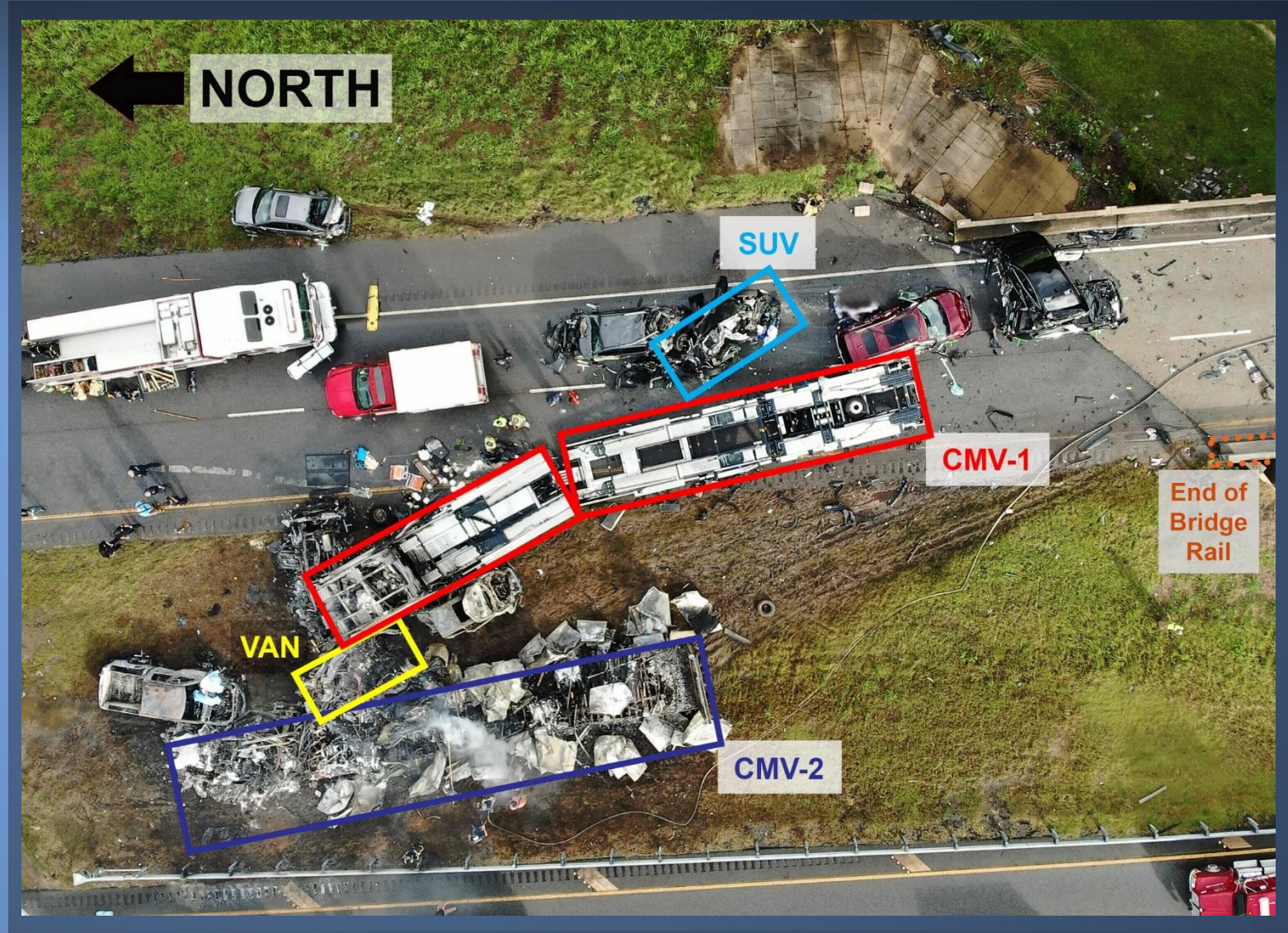
Greenville, AL

- Saturday, June 19th at about 2:20 p.m.
- Northbound lanes of Interstate 65 near milepost 138
- 12 vehicles
- 38 vehicle occupants



Crash Sequence

- SUV – 2020 Ford Explorer
- CMV-1 – 2020 Volvo car carrier
- Van – 2017 Ford F-350 Transit van
- CMV-2 – 2005 Freightliner



Potential Safety Issues

- Traffic speed in inclement weather
- Collision avoidance technology
- Commercial vehicle fuel tank integrity
- Motor carrier oversight

Coral Gables, FL

Sep 13, 2021



Big Spring, TX

November 19, 2021



Monaville, TX

December 17, 2021

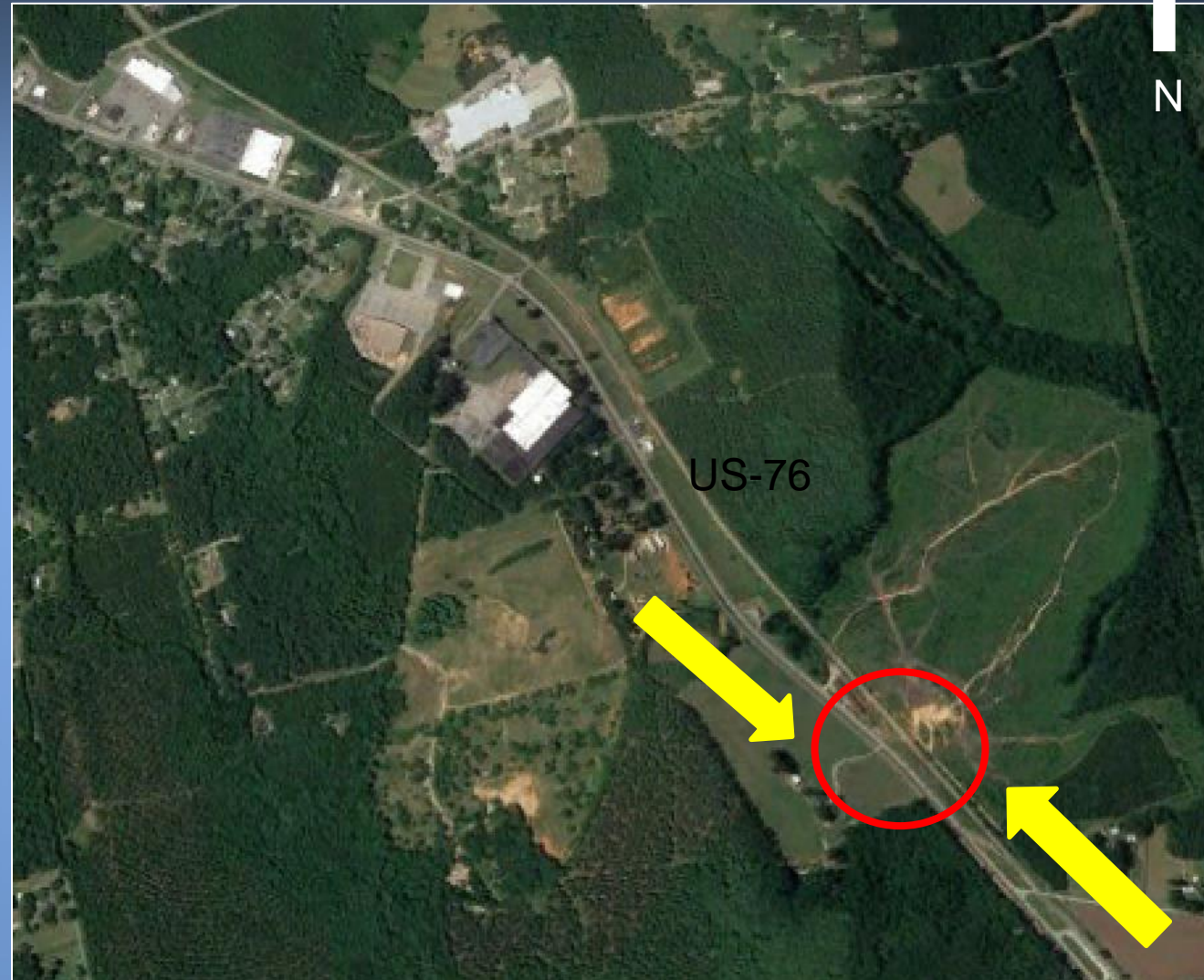


Completed Investigations

- Belton, SC -Adopted November 17, 2021
- Bryce Cannon, UT-Adopted May 10, 2021
- Mount Pleasant, PA - Board Feb 8, 2022
- Pala Mesa, CA- Final Report near completion

Belton, SC

- SUV
 - 2015 Chevrolet Equinox
 - 53- year-old driver
 - Heading eastbound
- Bus
 - 27-year-old driver
 - Heading westbound
 - 7 passengers
 - Anderson County DSNB



Crash Scene



Source: Anderson County Coroner's Office



Source: Anderson County Coroner's Office

2015 Chevrolet Equinox SUV



2009 medium-size bus (14-passenger)



Seatbelts Twisted



Findings / Recommendation

- Driver distraction due to cell phone use while driving
- Need for improvements to wheelchair securement training
- **To the National Association of State Directors of Developmental Disability Services:** Inform your members of the circumstances of this crash and advise them to ensure that their employees receive annual training in securing wheelchairs and their occupants for transportation.

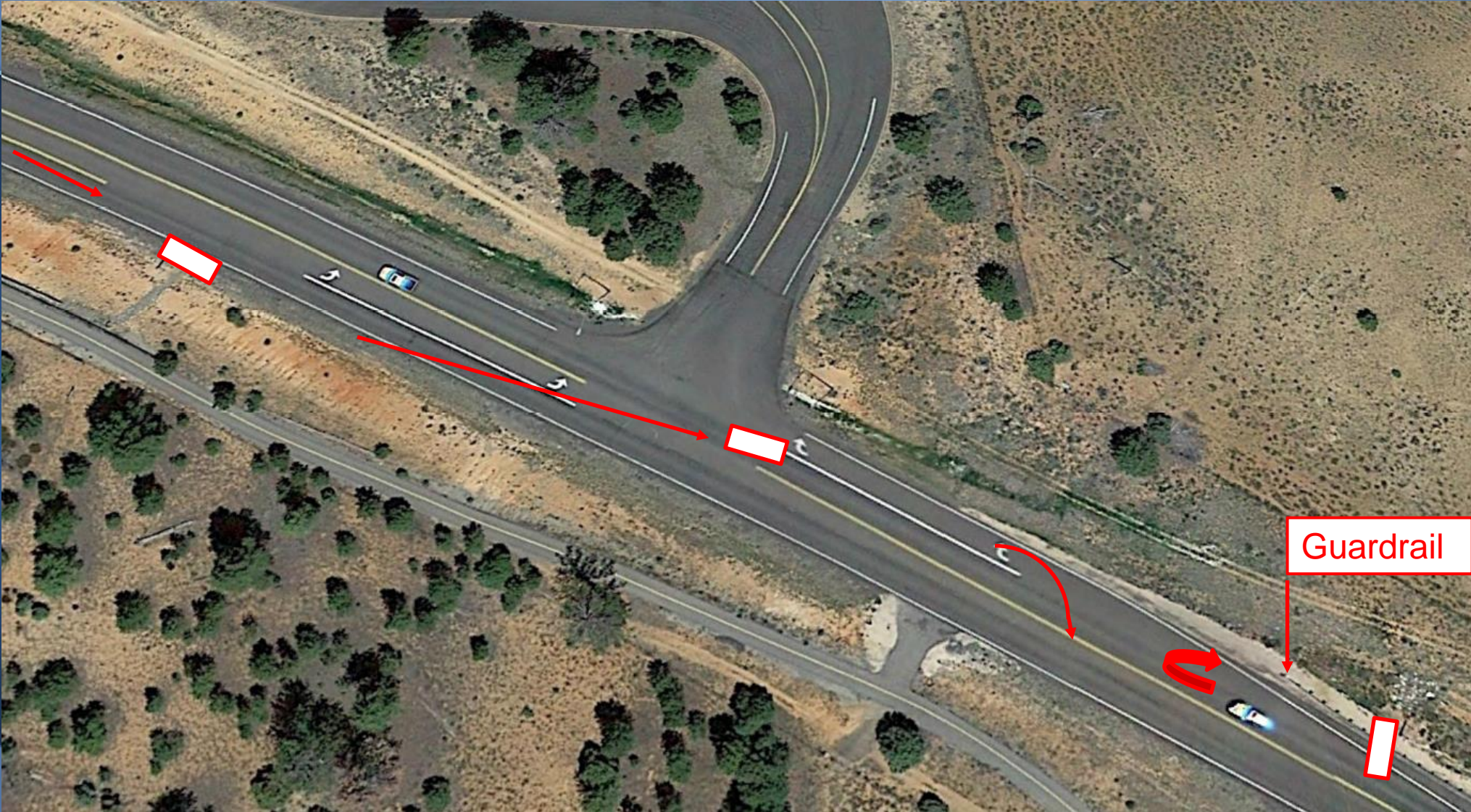
Bryce Canyon City, UT

Sep 20, 2019

- 2017 36-passenger Freightliner / Embassy medium size bus
- Utah State Route 12
- 60 year-old driver and 30 passengers



Crash Sequence



Injuries & Ejections

- 4 passengers were fatally injured
- 15 passengers were seriously injured
- 11 passengers received minor injuries
- The driver received minor injuries
- 12 passengers fully ejected
- 2 passengers partially ejected



Embassy Bus Lap Belts



Recommendations

- TO NHTSA: Require all newly manufactured commercial motor vehicles with GVWR > 10,000 lbs. to be equipped with lane departure prevention systems. (H-21-1)
- TO NHTSA: Require all newly manufactured buses, other than school buses, with GVWR > 10,000 lbs. to meet a roof strength standard that provides maximum survival space for all seating positions and accounts for typical window dimensions. (H-21-2)
- TO NHTSA: Require all newly manufactured buses, other than school buses, with GVWR > 10,000 lbs. to meet a window glazing standard that prevents occupant ejection. (H-21-3)

Mount Pleasant Twp, PA

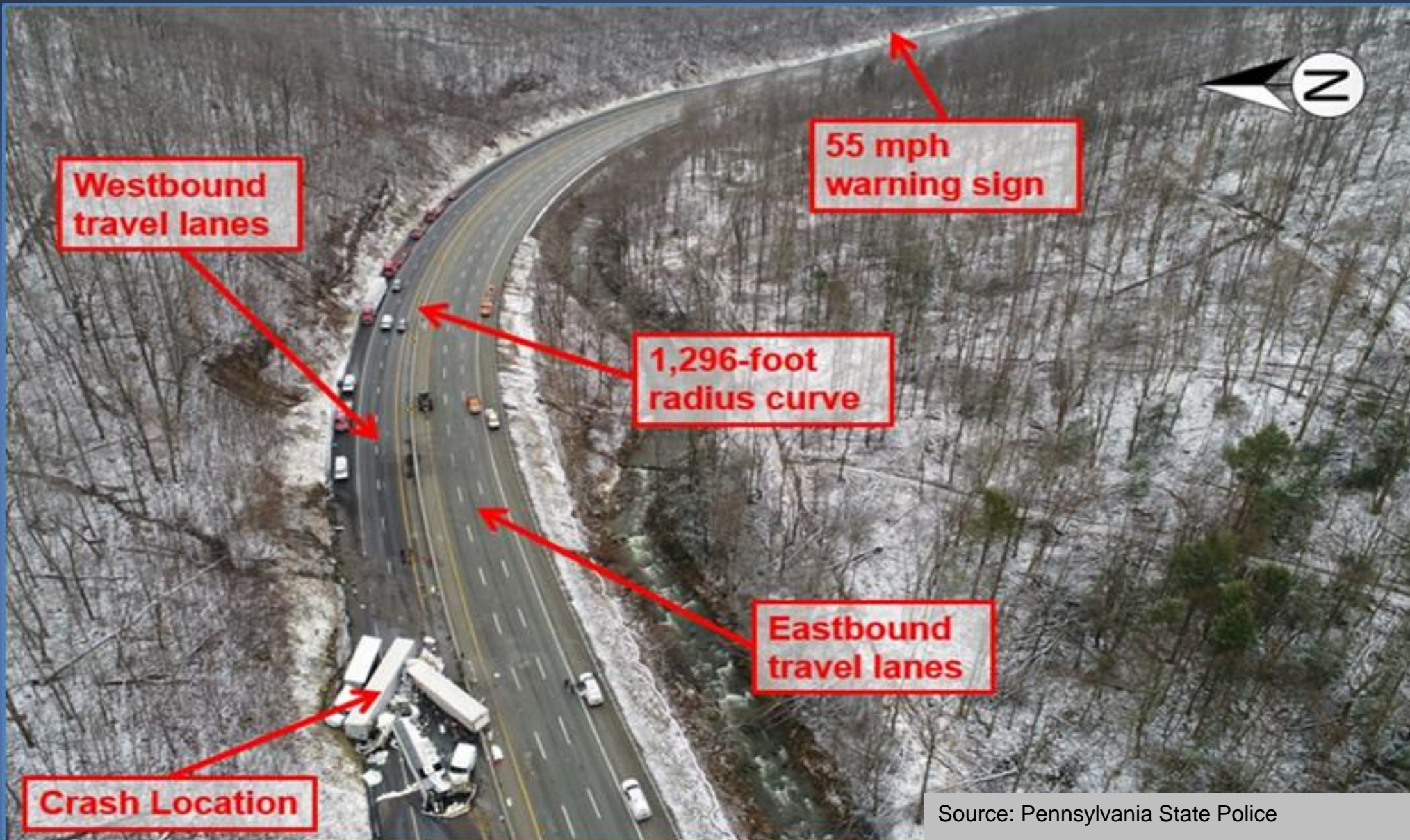
Jan 5, 2020



Source: PA State Police

Advisory Signs





Crash Location

**Westbound
travel lanes**

**1,296-foot
radius curve**

**55 mph
warning sign**

**Eastbound
travel lanes**

Source: Pennsylvania State Police

Vehicles at Final Rest



Potential Safety Issues

- Speed in Inclement Weather
- Crash Avoidance Technology on Large Trucks
- Fatigue Management
- Technology to detect icy road conditions

Pala Mesa, CA

Feb 22, 2020

- 2014 Freightliner bus
- Driver + 20 passengers
- Los Angeles to San Ysidro via I-15
- Driver's regular bus and regular route
- Raining off/on throughout trip
- Roadway was wet



CHP



Source: CHP



Potential Safety Issues

- Roof stiffness for medium size buses
- Pre-trip safety briefing
- Speeding in inclement weather
- Tire depth requirements for rear tires

Summary

- New advancements on our website
- Most Wanted List
- Update on crash investigations
 - Driver error in inclement weather
 - Driver fatigue
 - Seat belt use
 - Roof strength in midsize buses

We Thank You!



Prevostr X3 45



National Transportation Safety Board

Thank you for your participation!

Questions?

Michael.fox@ntsb.gov

www.nts.gov