

**Making Sense of the 2010
Congressional Elections: *Plotting the
Industry's Course in 112th Congress***



**ABA Webinar
November 10, 2010**

Impact Summary

- There will be a renewed emphasis on reducing taxes and the reach of government programs and “loopholes.”
- The incoming class of Republicans is younger and more conservative than previous incoming classes. These members may clash with the Democratic Senate, Obama Administration and even the other Republicans in the House and Senate.
- The prior two points lead to this third point: there will be little that the two (or three) sides will be able to agree on for the next two years.
- On the other hand of the incoming class 70 of them have previously held elected office, which could mean that they know their job is to govern and that attention will have to be paid to getting the government to function.
- Among the issues that there may be agreement on (ultimately) are the six year transportation reauthorization bill, trade agreements and Afghanistan.

Our Charge

- ABA Government Affairs works for and seeks to protect the motorcoach, tour, and travel industry with legislative and regulatory activity at the federal, state, and local level.
- ABA does that by building consensus and support for our issues of interest among key stakeholders:
 - Legislative (Dream stage)
 - Regulatory (Implementation Stage)
 - ABA Members (Feedback Stage)

ABA's Tool Kit

- ABA's tools include:
 - Research
 - 3rd Party Outreach
 - Industry Groups
 - UMA, NTA, State Bus Associations
 - Transportation Coalition Groups
 - Highway Users Alliance, American Trucking Association
 - Niche Issue Partners
 - Union of Concerned Scientists, National Resource Defense Council
 - Influential Think Tanks
 - Brookings Institute
 - Access to Legislative Leaders
 - BUSPAC
 - YOU!

ABA Legislative Priorities

- Continuation of partial federal fuel tax exemption.
- Creation of a investment tax credit for purchase of new buses.
- Increased funding for travel promotion.
- Increased funding for rural bus service.
- Inclusion of industry in all levels of transportation planning.
- Increased funding for intercity bus security and wheelchair lift program.
- Protection from mandated increased operational costs.

2010 Congressional Elections

- Democrats previously had a majority in the House of Representatives.
 - 254 Dem. seats vs. 177 Rep. seats
 - Now shifts to 239 Rep. Seats vs. 186 Dem. Seats
 - 60 + seat change!
- Republicans have trimmed the margin in the Senate.
 - 57 Dem. seats vs. 41 Rep. seats
 - Now shifts to 52 Dem. seats vs. 47 Rep. seats

Key Committees to Effect Change

House

- Appropriations
- Ways & Means
- Transportation & Infrastructure
- Homeland Security
- Small Business

Senate

- Appropriations
- Banking
- Finance
- Commerce
- Homeland Security
- Environment & Public Works

Committee Changes Coming

House

- Appropriations
 - 12 members gone
- Ways & Means
 - 7 members gone
- Transportation & Infrastructure
 - 21 members gone
- Homeland Security
 - 6 members gone
- Small Business
 - 8 members gone

Looking Towards the 112th Congress

- We need to educate the new members on our industry and our issues.
- ABA needs to find new champions for its priority issues.
- We need your help!
- Get Involved.

<http://www.buses.org/Government-Affairs>



The image shows a screenshot of the American Bus Association (ABA) website. At the top left is the ABA logo, which consists of the letters 'ABA' in a stylized red font with a blue outline, and the text 'AMERICAN BUS ASSOCIATION' and 'Representing the motorcoach, tour and travel industry' below it. To the right of the logo is a navigation menu with links for 'Home', 'My ABA Login', 'Find ABA Members', 'Contact Us', and 'Marketplace'. Below the menu is a search bar with a 'SEARCH' button. In the top right corner, there is a blue triangle with the word 'JOIN' in white. A dark blue horizontal bar contains several menu items: 'GOVERNMENT AFFAIRS', 'MEMBER RESOURCES', 'NEWS & PUBLICATIONS', 'ABA FOUNDATION', 'FOR TRAVELERS', and 'ABOUT US'. The main content area features a large photograph of a teal motorcoach in front of a white classical building, likely the U.S. Capitol. A red banner is overlaid on the bottom left of the photo with the text 'GOVERNMENT AFFAIRS'. Below the photo, on the left side, is a grey sidebar with a list of links: 'Get Involved', 'Bus Industry Safety Council', 'Legislation', 'Rules & Regulations', and 'BUSPAC'. On the right side, the heading 'Government Affairs & Policy' is displayed in a large blue font. Below this heading is a paragraph of text describing the ABA's Government Affairs and Policy staff. At the bottom right, the text 'Your Small Business' is written in a red font.

ABA
AMERICAN BUS ASSOCIATION
Representing the motorcoach, tour and travel industry

Home My ABA Login Find ABA Members Contact Us Marketplace

SEARCH

JOIN

GOVERNMENT AFFAIRS MEMBER RESOURCES NEWS & PUBLICATIONS ABA FOUNDATION FOR TRAVELERS ABOUT US

GOVERNMENT AFFAIRS

Get Involved

Bus Industry Safety Council

Legislation

Rules & Regulations

BUSPAC

Government Affairs & Policy

ABA's Government Affairs and Policy staff brings more than half a century of combined experience, serving in both government agencies and within various sectors of the motorcoach industry to its role as the voice of the industry before elected officials. ABA's team pursues opportunities by closely monitoring key legislative and regulatory developments, safeguards the rights of motorcoach operators, protects members from inequitable business regulation, and keeps members informed. ABA is on-call to respond to questions and lead members through the bureaucratic maze of U.S. and Canadian regulations any time via ABA Deskside Assistance.

Your Small Business

http://www.buses.org/Government-Affairs/Get-Involved

Council

Legislation

Rules & Regulations

BUSPAC

[Home](#) • [Find Officials](#) • [Bills, Alerts & Votes](#) • [Elections](#) • [Media](#)

Tell Your Senators To Stop The Bad Bus Bill

S. 554 will likely come before the Senate in the "lame duck" session which begins November 15. While the bill claims to enhance motorcoach safety, in reality it is a bad bill that can't be made right. It must not be passed by the Senate during the lame duck session. ...

[Take Action](#)

Action Alerts

[Your Voice Can Help Show Sen. James Webb \(D-VA\) That Buses Fight Gridlock!](#)

[Save the Bus Security Grants](#)

[Show Senator That Buses Mean Business!](#)

[Write Congress Urging Passage Of TRIP Pro-Tourism Bill](#)

Bills to Watch

Bill Name/Description	Our Position
H.R.2024 Introduced.Commercial Motor Vehicle Advanced Safety Technology Tax Act of 2009	No position
S.1582 Commercial Motor Vehicle Advanced Safety Technology Tax Act of 2009	No position

[See all key legislation.](#)

Find Your Elected Officials

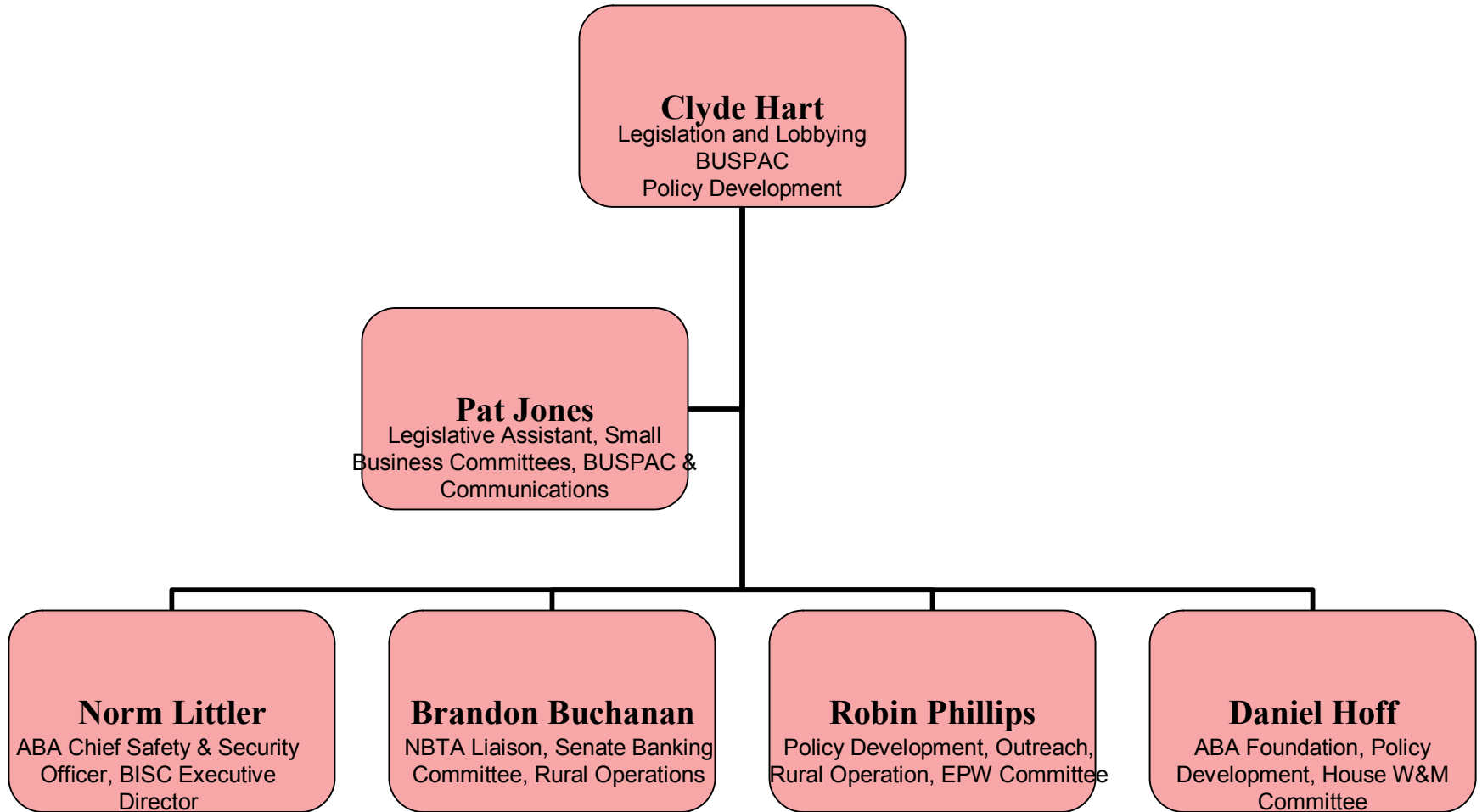
Elected Officials



Enter your ZIP Code and click "Go" or [click here](#) for other searches.

Zip Code [Go](#)

Organizational Chart & Key Contacts



ABA's All-Access Card

Get Involved

Bus Industry Safety
Council

Legislation

Rules & Regulations

BUSPAC



BUSPAC is the Political Action Committee of the American Bus Association and allows the motorcoach and group travel industry to speak with a strong voice on Capitol Hill.

Funding

BusPAC receives its funding on a voluntary basis from ABA members involved in all aspects of the motorcoach tour and travel industry.

Disbursements

BusPAC funds are contributed to political campaigns of Members of the United States Senate and House of Representatives who are both leaders in Congress and have shown support of the industry. BusPAC has, and will continue to use its resources to promote the needs of the industry to those on Capitol Hill.

Contributions

BusPAC is regulated by the Federal Election Commission (FEC). BusPAC thus requests your authorization to solicit your company's executive and administrative staffs for contributions. FEC regulations do not allow corporations or labor unions from contributing to PACs. Therefore, only personal checks may be accepted. Also, the FEC regulates the amount an individual may donate to a PAC. Currently, the limit is \$5,000 per year. For reporting purposes only, all donations over \$250 must be disclosed to the FEC.

Questions?

Call me at (202) 218-7228

Email me at chart@buses.org